

FIRMGRIP

Introduction



FIRMGRIP walkway and ramp surface has been developed to meet the requirement for a safe and efficient medium that will instil confidence when mobility in extreme or hazardous conditions prevail or as a safe non-slip surface for use in everyday environments.

The FIRMGRIP walkway surface is a combination of components that provide a very durable water resistant product which can be easily be fitted in all weather conditions. Production consists of seven different processes which engineer a unit with an encapsulated lattice that prevents peeling and structural deterioration, thus ensuring a maintenance free surface, which when used in normal conditions will last for years - without any remedial attention being required.

When specialised conditions prevail, FIRMGRIP walkways and ramps can be produced to withstand corrosive situations or areas where fire resistance is critical. Standard FIRMGRIP walkways are resistant to most everyday products and in wintry conditions where snow or ice are commonplace, salt can be applied to the surface without damaging its durability.

Ramp and walkway bases can be manufactured to most sizes and to suit most conditions. Although generally produced in a mid-brown colour, most British Standard or RAL colours are available on request.

FIRMGRIP

FIRMGRIP Safety Walkway



FIRMGRIP safety walkways are manufactured to customers' specifications in size thickness and colour and cover many relevant safety aspects both at ground and roof level. FIRMGRIP walkways are produced with ease of fitting in mind, adaptations, alternations and additions can be carried out in factory or on site using standard tools. Access on the incline or decline can be made with confidence because of FIRMGRIP non-directional surface. With an option of a variety of different composites FIRMGRIP SAFETY WALKWAYS can be manufactured to the clients load bearing requirements.



FIRMGRIP

FIRMGRIP Mobility Access Ramp



FIRMGRIP is now used by many Local Authorities and Social Work Departments as an integral part of safe, modern walkways and ramps.

FIRMGRIP sheeting is manufactured ensuring the core material is encapsulated in a resin/glass-fibre shell. This can be manufactured in any British Standard or RAL colour. Used in conjunction with metal or timber framed walkways or ramps, FIRMGRIP sheeting creates an aesthetically pleasing product, which is not only easy to fit in all weather, but is very durable.

For information on design, texture or a variety of core materials, please contact our design department with our specifications at:

FIRMGRIP mobility access ramps are individually designed with the 'user' in mind. With an essential 1 in 12 gradient, the quality materials used in manufacture are selected with a variety of aspects considered.

The main criteria is that the surface provides the best traction for the user and helper, even in the most extreme situations. With a variety of textures, safety is not compromised.

Aesthetic value is a very high priority for our customers, industrial and clumsy ramps have no place in their homes, and likewise domestic ramps will not necessarily suit public buildings and industrial situations. By speaking to our design department, we will match your needs with the most appropriate product.

Instantly usable when fitted, all ramps and surfaces arrive on site **ready to use**. Where applicable, once fitted to the frames, the surface can be used immediately as the surface is integral part of the product and sealed in during manufacture, they are virtually maintenance-free.

FIRMGRIP

FIRMGRIP Flooring



FIRMGRIP has been using [Chemco International Ltd.](#) Diamond top™ Anti-slip Floor Coating which has following benefits:

Safer Surface	The non-abrasive surface is far less hazardous than sand or aggregate filled systems.
Easy Clean	Unlike carborundum stripping or aggregate filled systems, the surface is easily cleaned with a mop and bucket.
Colour Matched to your Décor	The product can be made to match your décor and floors, unlike sand filled coatings. The colouring will hide traffic dirt and does not show signs of tracking. It keeps its appearance far longer than traditional systems.
Low-maintenance No Buffing	Unlike traditional systems that require expensive buffing and continual maintenance, this product requires minimal polishing. If it is damaged, it can be patch repaired very easily.
Scratch Resistant Surface	With its unique structure, this flooring is very wear resistant. It does not mark and will not scratch and show signs of heavy traffic. It does not wear away unlike soft elastomeric anti-slip systems.
Durable	The product is chemically resistant to many acids, alkalis and solvents. It has been approved for use by the MOD for use in new ship specification.
Aesthetic Appearance	The product is far more attractive than either aggregate filled or carborundum tape. It keeps its appearance far longer and can be an attractive feature in a building and not a functional eyesore.
Hygienic Surface	Traditional aggregate filled systems are ideal media for bacteria to thrive in. The unique surface allows very efficient cleaning and does not provide a breeding ground for bacteria.

FIRMGRIP

FIRMGRIP Stairs

FIRMGRIP STAIR AND STIR TRENDS are designed to provide confidence and safety in wet or dry conditions. Manufactured to provide a non-directional grip surface essential where multi-grip situation arise, these products are suitable for indoor or outdoor use such as the stairs and walkways shown used by **SCOTRAIL**



FIRMGRIP

Fixing & Safety



Fixing:

One of the many properties of FIRMGRIP Ramp Bases is, it can be fitted in all weather. Immediately it is fixed, it can be used so that the user will have the instant benefits of this new type surface.

FIRMGRIP ramp surface is generally supplied on a base core material. Although this can vary, the most commonly used core is timber - this not only gives ideal thermal properties but also variable fixing points for brackets or for drilling. In most cases the ramp base is drilled then bolted or screwed through to the supporting strap on the ramp frame - this could be either timber or metal.

The versatility of FIRMGRIP ramp bases means that once this simple exercise of fixing the base to the frame is complete, the only remaining process is to seal the bolt or screw with silicon, in order to avoid corrosion. It is also recommended that a fillet of silicon should be run down either side of the ramp base at the kickboard, this will eradicate a dirt build up in the joint over a period of time.

Safety:

When cutting or drilling FIRMGRIP Ramp Bases, it is recommended that safety goggles and mask are worn, especially when using high speed tools.

In further instructions or information are required, please contact us at:

+44 (0) 141 880 5613

FIRMGRIP

Case Studies

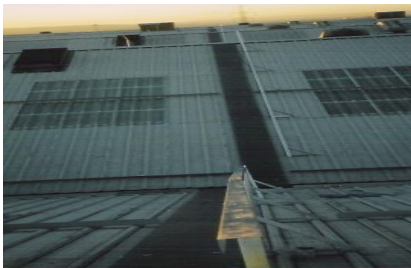


RAMPS



FIRMGRIP RAMPS are used by many local authorities and social work departments, shown in the photograph is a refurbished ramp, this work was carried out for [Glasgow City Council](#). Initially FIRMGRIP were alerted to the condition of the ramp by the social work department. The main concern was the risk caused by the slippy and uneven surface; this was the first priority to be addressed.

The solution was achieved by removing affected areas and fitting 12mm FIRMGRIP ramp panels to the substructure, additional remedial work also carried out was the replacement of handrails, the fitting of kickboards and the treatment and coating of the timber frame. All this work was achieved in a day with very little disruption to the client!



Walkways



Safe access at height is of the ultimate importance, the photographs show FIRMGRIP Walkways fitted to the new roof system at Terex erected by [Hutton & Swailes Ltd](#) and recommended to the client because of its durability and excellent instant grip properties, essential in these condition.

Working with the contractor, the walkway was designed using suitable composites, in order to attain with ease the fitting on site of a safety handrail.



Flooring



When approached by [East Renfrewshire Council](#) to resolve the problem of cleanliness and safety within a typical school toilet [Diamond Top](#) was the obvious solution.

The tile area was prepared and primed and left for around 4 hours after which Diamond Top was applied and given 24 hours to cure, with immediate effect, the lingering smells had disappeared and the toilet finished with a fresh, bright nonslip surface even under wet condition.

Using a soft brush and suitable cleaner [Diamond Top](#) can be kept in pristine condition and with its durable hardwearing and non-porous surface it is long lasting, cannot lift and eradicates smells!